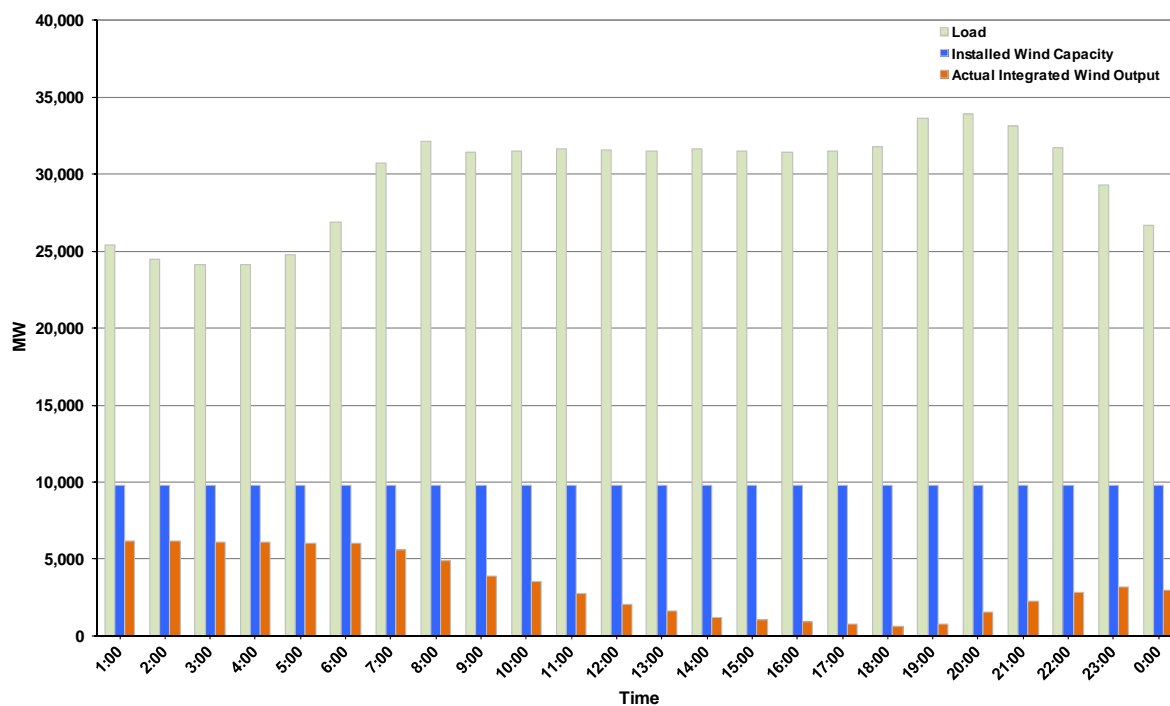




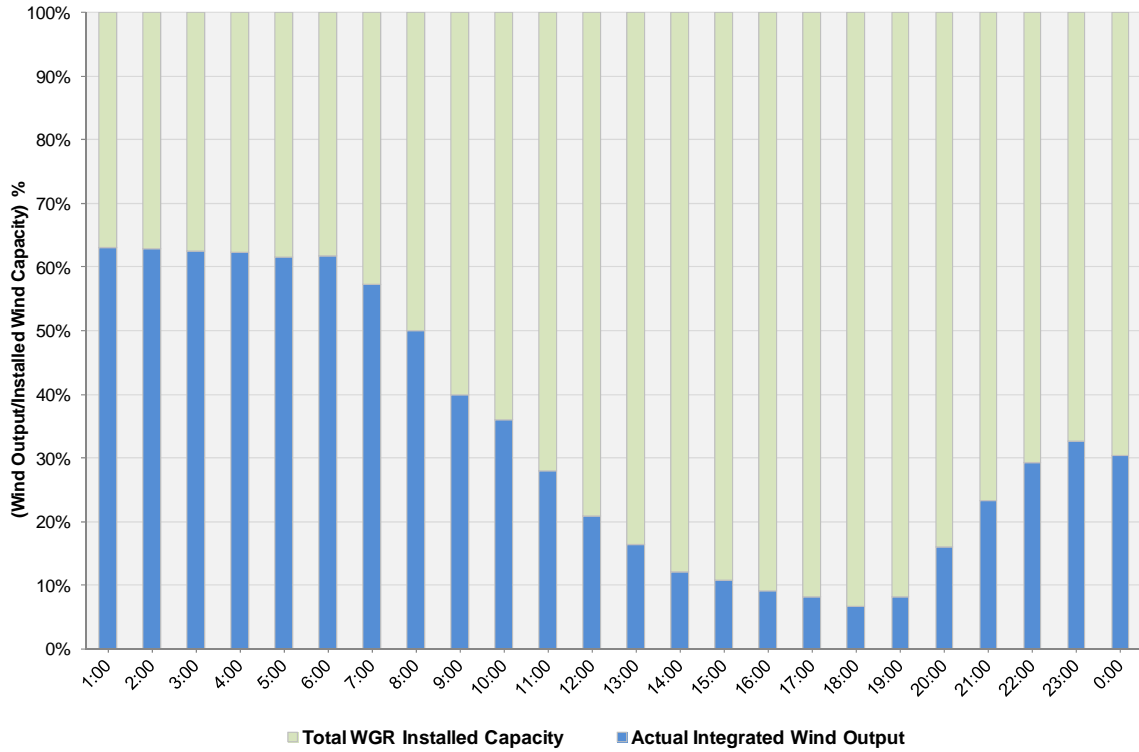
ERCOT Grid Operations Wind Integration Report: 01/31/12

Peak Load	33,875 MW
Load Peak Hour (HE)	20
Wind over Peak	1,573 MW
Wind Record 10/07/11	7,400 MW
Max Wind Value	6,283 MW
Wind Peak Time	00:45
Wind Integration %	25.05%

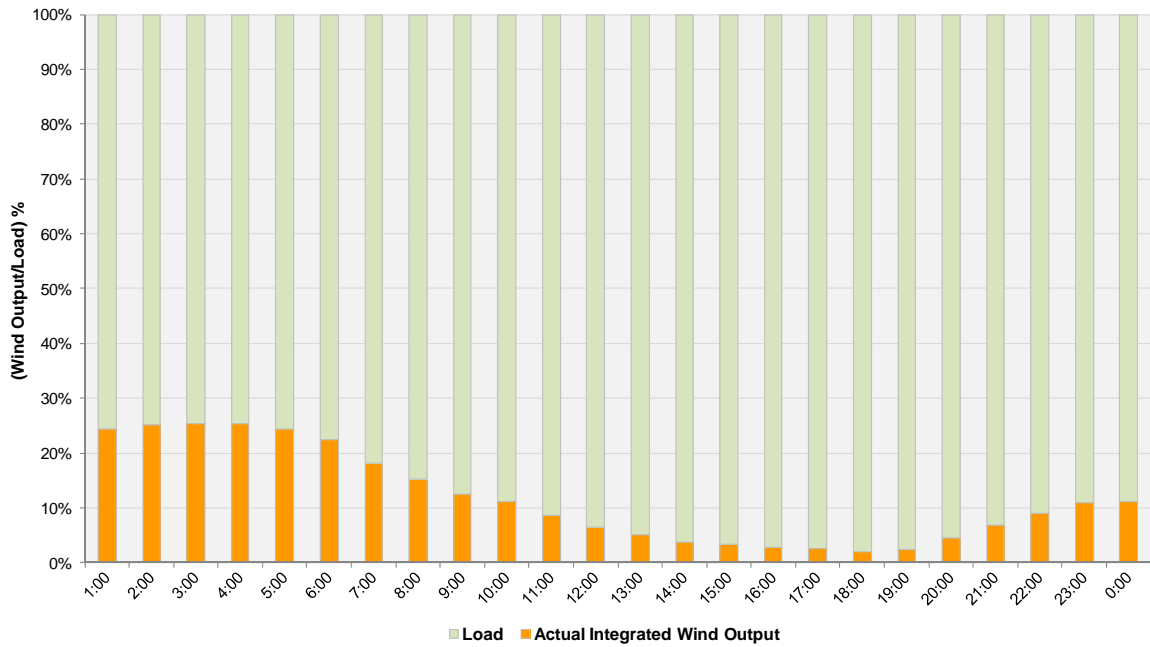
**Hourly Average Actual Load vs. Actual Wind Output
01-31-2012**



**Actual Wind Output as a Percentage of the Total Installed Wind Capacity
01-31-2012**



**Actual Wind Output as a Percentage of the ERCOT Load
01-31-2012**



ERCOT Load vs. Actual Wind Output 1/24/2012 - 1/31/2012

